

A Time of Flourishing

Spring 2012



Elizabeth Hernandez, M.A.R.
Executive Director

Volume 1, Issue 1
April 10, 2012

Recent Highlights

- Training Series
- Upticks in Growth
- Psychiatric Resident Bianca Previdi, M.D. has nearly completed her residency with us
- Counselors Sheila Staley, M.Ed. and Nathan Swanson, M.A. to dedicate 20 hours per week starting in April
- Michelle Bonilla to increase to 3/4 time as Intake Coordinator
- Strategic Planning

*Remain in me, and I will remain in you.
No branch can bear fruit by itself; it must remain in the vine.
Neither can you bear fruit unless you remain in me. (John 15:4)*

Abiding Grace

In a recent letter, J. Job Lin, M.D. our psychiatric support for the past year and a half, expressed his thanks to us, to our board, clinicians, staff and volunteers as he reflected on his work at Refuge.

Such a depth of gratitude is something that must be passed on to each of you as well.

I am sorry to say his work with us is now drawing to an end.

However, we trust that as he is being called elsewhere that he will continue to work and serve with as much honor and integrity where he is headed as he has here.

May his parting words serve as a small glimpse into what the day-to-day activities are like

here at this office, and what it can mean to people who walk with an abiding grace.

He writes:

“Words are inadequate to describe the unique privilege and honor it is to work as a part of this team serving the community of The Place of Refuge. What patients describe is the experience, as much as humanly possible and spiritually discernible, each particular person’s unique experience of oppression, trauma or human sufferings.

What I am most grateful for is the spirit of humility and servant-heart that is evident among the staff at POR. God’s presence is so clearly sensed here, and when you sense trust grow in patients’ eyes and attitudes,

the window they offer for you to speak the particular Scripture into their lives, you know that none of that is possible without the many prayers and sacrifices of many through whom God birthed The Place of Refuge to reclaim souls lost without their Shepherd.”

It is a wonder what is happening with our clients. The work is remarkable.

“Words are inadequate to describe the unique privilege and honor it is to work as a part of this team...”

Training Series at Tenth Presbyterian

Our most recent training series is well under way and is now moving into its fifth session.

A core group of seventeen parishioners from Tenth Presbyterian Church in Center City Philadelphia are participating in a weekly training intensive led by Elizabeth Hernandez in an effort to equip participants with a variety of much-needed

skills in the art of counseling. The training will allow participants to walk alongside the broken and hurting people in their midst.

Members of the group will learn to counsel wisely and humbly.

Coursework consists of twelve classes on subjects ranging

from Basic Listening Skills to Trauma, Depression, and Basic Psychodynamic Techniques.

The series is tapping into the seasoned experiences of six different Refuge mental health professionals bringing to the group a wealth of perspectives and approaches.

Recent Highlights

Thanks to all who have put in such a great effort over the past six months; we have undergone a period of remarkable growth!!

In the first quarter already this year, we hosted almost 400 appointments. We are demonstrating a tremendous 27% rate of growth from our program totals for the first quarter of last year and are making huge strides towards our goal of reaching full capacity.

We have been given such grace to serve here. After bringing Michelle Bonilla on with an increased commitment of 30 hours per week, in February, the result has been felt immedi-

ately. Our No-Show Rate for February was only 3%!!

It is a real privilege to pass on this news to you of the satisfaction we are hearing from our clients. This points to the unique service people are receiving at *The Place of Refuge* and our hope that this work will continue to bear great fruit.

Looking ahead to the rest of the year, we are planning to embark on a series of new outreach events and trainings, and other collaborative projects including work with Liberti East, Sharon Baptist, Barnabus Transformation Ministry, and more, all serving to spread this

very important message of hope.

Over this time, as we continue to grow, we will continue to need your prayers and support.

As our reach expands, we will continue to be tested in profound ways. To guard and guide Refuge through this intermediate phase, the Board of Directors is developing a five-year strategic plan that will serve to guide us prayerfully through the years ahead.



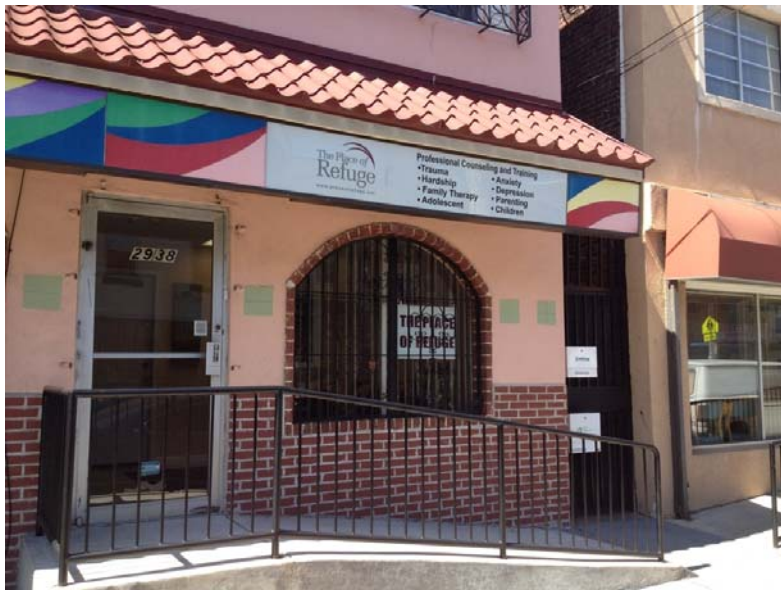
Counselors Nathan Swanson, M.A. and Sheila Staley, M.Ed. each to start 20 hours per week

Spring 2012

2938 N. 5th Street
Philadelphia, PA 19133

Phone: 279-909-8550
Fax: 267-909-8552

E-mail: info@placeofrefuge.net



**A place of help, hope & healing
in Philadelphia!**

The Place of Refuge is a 501(c)3 is a non-partisan, non-profit organization that seeks to bring redemptive healing through faith-based trauma treatment and training focusing on urban populations and their caregivers.

Without your support the crucial work we offer in one of the most distressed areas of Philadelphia will not continue.

It is our privilege to do this work and our every hope is that thousands will be served here in the years to come.

Please join with us and make a gift of support today.

“Even preparing the envelopes at a place like this feels like a great honor.”

-Sharon Mangum, Graduate Intern
from Biblical Theological Seminary

We need your support!!